

Description

BP2364XN is a high precision non-isolated APFC buck LED driver, specially designed for universal mains with constant current control. BP2364XN operates in Critical Conduction Mode to reduce the switching loss and optimize the EMI.

BP2364XN remove the VCC capacitor, COMP capacitor and R_{CS} resistor to simplify the PCB layout. And it utilizes specific architecture to achieve high output current, small and increased thermal resistance.

BP2364XN offers full of protection to ensure the system reliability, including load short protection. The system efficiency is improved by the thermal regulation. The output current is reduced when the condition of over temperature.

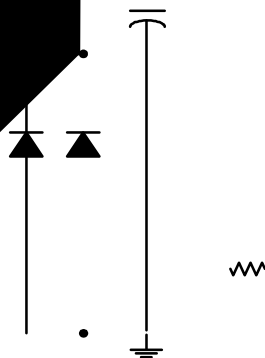
Typical Applications

Features

- Active-PFC for High PF and Low THD
- No VCC and COMP capacitor
- Critical Conduction Mode Operation
- LED Short Protection
- LED Open (OVP resistor ADJ) Protection
- With "Switch Color" Enable function is compatible with sensor light
- Cycle by Cycle Current Limit
- Available in ASOP8 Package

Applications

- LED Bulb
- LED Tube
- Other LED Light



Naming rules

BP236 4 XN

Series name

Package type

Typical Rds(on)

Ordering Information

Part Number	Package	Quantity	Marking
BP2364XN	ASOP8	Tape 5,000 pcs/Reel	BP2364 XXXXXN XXXXXX

Pin Configuration and Marking Information

Disclaimer

The information provided in this datasheet is believed to be accurate and reliable. However, Bright Power Semiconductor (BPS) does not warrant the accuracy, completeness or reliability of the information provided in this document. BPS provides information in this datasheet "AS IS" and with all faults. It is the user's responsibility to verify the information for a specific purpose, or non-infringement of intellectual property rights of BPS or any other third party. BPS disclaims any liability and is not responsible for consequential or incidental damages.

BPS CONFIDENTIAL