

Description

The BP3167XH is a high precision primary-side feedback and regulation controller for LED lighting. it operates in constant current control mode and is ~~designed for universal input, it can achieve~~ ~~conduction mode and especially suitable for flyback~~ ~~converter under~~ universal input.

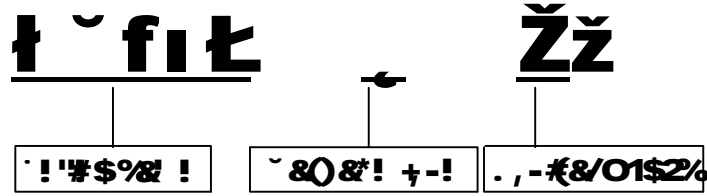
The BP3167XH integrates a 600V/650V power MOSFET, with gate MOSFET driving technique. It doesn't need ~~the auxiliary winding for VCC supply. It can achieve~~ ~~excellent constant current performance with very few~~ ~~external components through its cost reduction~~ ~~minimised.~~

The BP3167XH offers rich functions to improve the ~~system reliability, including LED short circuit~~ protection, LED open n, protection thermal regulation function.

Features

710-3-2022

Naming rules



Ordering Information

Part Number	Package	Packing Method	Marking
BP3167XH	DIP7	Tape 50 p / Tube	BP3167X XXXXXXY WXYYYH

Pin Configuration and Marking Information

ROVP

